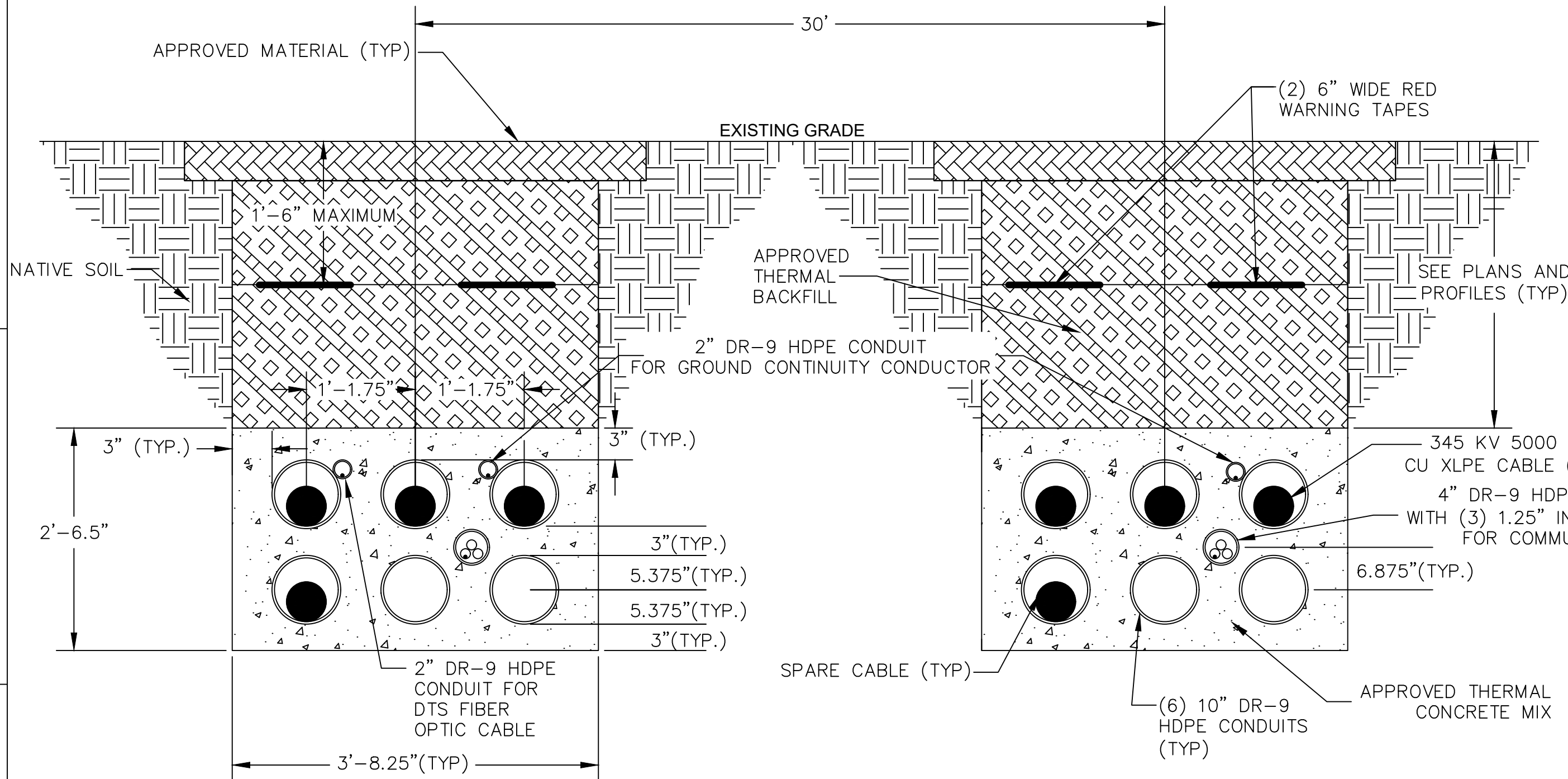
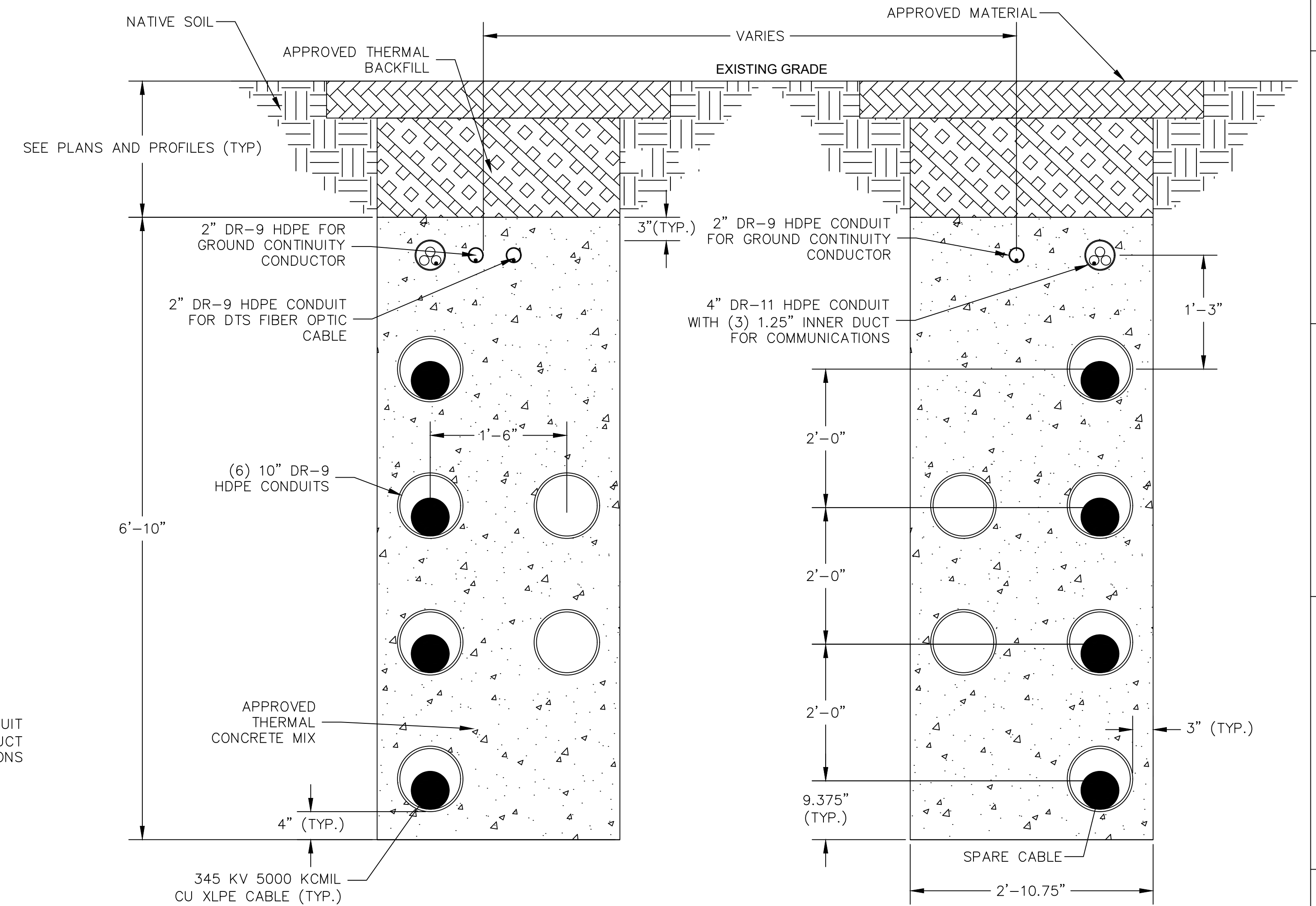


1 2 3 4 5 6 7 8 9 10

A B C D E F



DETAIL 1
 DUCT BANK - SEPARATED HORIZONTAL (N.T.S.)



DETAIL 2
 DUCT BANK - SEPARATED VERTICAL (N.T.S.)

- NOTES:**
1. ALL DUCT BANKS ARE DISPLAYED LOOKING AHEAD STATION.
 2. CABLE SIZE ACCESSORIES, HARDWARE, AND EQUIPMENT PENDING FINAL VENDOR VERIFICATION.
 3. UNDER NEW YORK STATE EDUCATION LAW ARTICLE 145 (ENGINEERING), SECTION 7209 (2), IT IS A VIOLATION OF THE LAW FOR ANY PERSON, UNLESS ACTING UNDER THE DIRECTION OF A LICENSED PROFESSIONAL ENGINEER, TO ALTER THIS DOCUMENT.
 4. DRAWING PREPARED UNDER KUNHAL PARIKH-LICENSED PROFESSIONAL ENGINEER IN THE STATE OF NEW YORK.

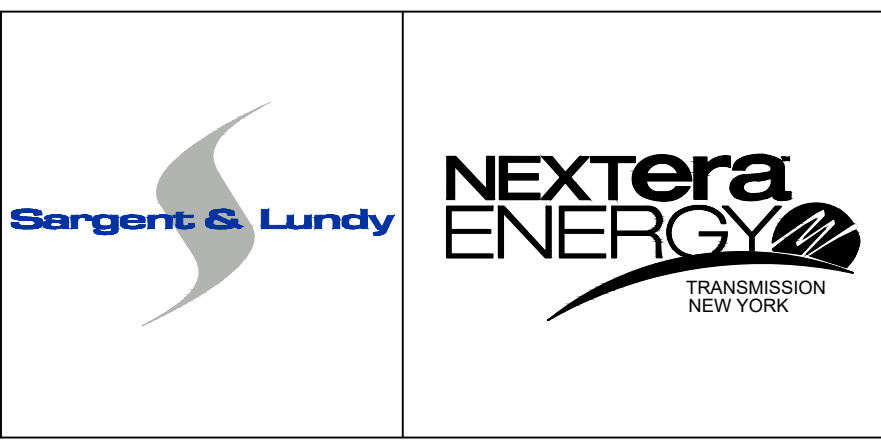
PRELIMINARY
 FOR PERMIT ONLY

NO	DATE	REVISIONS AND RECORD OF ISSUE	DRWN	REVD	APPR	COMP	APPD:	KVP	DATE:	04/24/2018
E	09/09/2020	ISSUED FOR PERMIT	DIV	JDJ	KVP	S&L				
D	08/19/2020	PRELIMINARY - ISSUED FOR REVIEW	DIV	JDJ	KVP	S&L				
C	6/21/2020	PRELIMINARY - ISSUED FOR REVIEW	DIV	JDJ	KVP	S&L				
B	02/27/2020	PRELIMINARY - ISSUED FOR BID	DIV	JDJ	KVP	S&L				
A	01/28/2020	PRELIMINARY - ISSUED FOR REVIEW	DIV	JDJ	KVP	S&L				

SCALE:
AS SHOWN

CONTRACTOR/INSTALLER SHALL TAKE ALL APPROPRIATE PRECAUTIONS TO ENSURE THE SAFETY OF ALL PEOPLE LOCATED ON THE WORK SITE, INCLUDING CONTRACTOR'S/INSTALLER'S PERSONNEL (OR THAT OF ITS SUB-CONTRACTOR(S)) PERFORMING THE WORK.

ANY MODIFICATION OR ADDITION TO THIS DRAWING BY ANY ORGANIZATION OTHER THAN SARGENT & LUNDY IS NOT THE RESPONSIBILITY OF SARGENT & LUNDY.



NEXTERA ENERGY TRANSMISSION NEW YORK, INC
 EMPIRE STATE LINE
 345 KV DUCT BANK
 DUCT BANK CONFIGURATIONS
 13666-003-T1-0600