

NextEra Energy Transmission New York, Inc.
(NEETNY)
Empire State Line
Case 18-T-0499

Appendix K
Drainage Line Repair Plan

September 2020

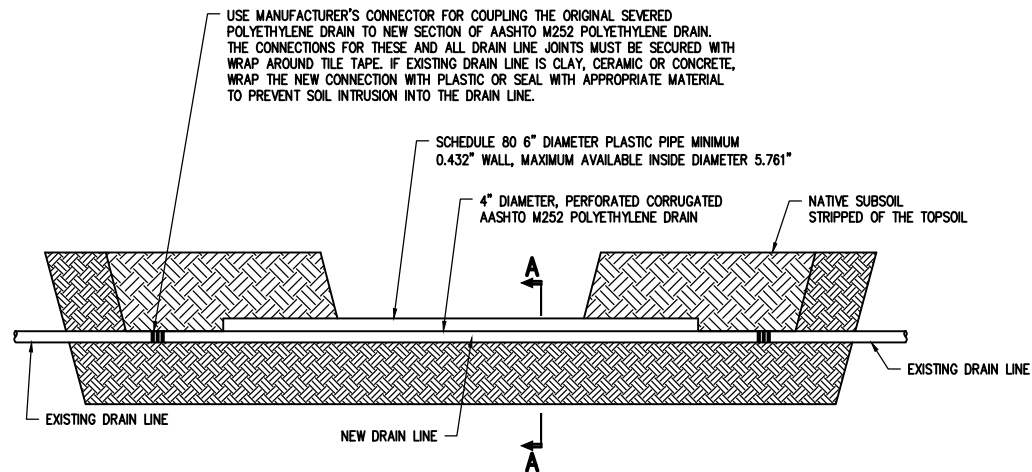


NextEra Energy Transmission New York, Inc. (NEETNY) will minimize the potential for damaging drain tile by installing equipment matting in all areas where construction equipment will pass through agricultural fields. NEETNY's Agricultural Inspector (AI) will conduct a visual inspection immediately after equipment matting is removed from each field to check for evidence of drain tile damage. NEETNY will also provide all farm owners/operators with a telephone number to facilitate direct contact with the AI through the construction, restoration, and remediation phases of the Project.

In agricultural areas where construction activities result in damage to drain tile, as observed through visual inspection and/or communication with the farm owner/operator, NEETNY will repair the drain tile in accordance with the Natural Resources Conservation Service Practice Standards for subsurface drainage tiles and following Code 606 standards. All new plastic drain tubing will meet or exceed the American Association of State Highway and Transportation M252 specifications.

NEETNY met with the Erie County Soil and Water Conservation District (SWCD) on February 13, 2020. During that meeting, the Erie County SWCD indicated that they will coordinate with the Niagara County SWCD regarding the Project. NEETNY provided the Erie County SWCD a Draft Drainage Line Repair Plan on April 10, 2020, for review and comment. The Erie County SWCD provided comments on the Draft Drainage Line Repair Plan to NEETNY on August 10, 2020. NEETNY submitted a revised Drainage Line Repair Plan to the Erie County SWCD for comment on August 24, 2020. On August 28, 2020, the Erie County SWCD advised NEETNY that the revised plan addressed their comments (see Appendix H).

A schematic of the drain tile repair specifications is provided below.

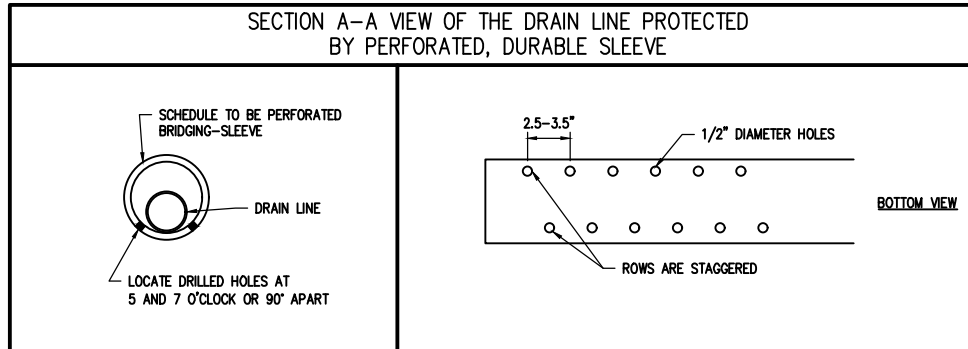


NOTE:
TOP SOIL TO BE REPLACED AND AREA STABILIZED AFTER DRAINAGE LINE REPAIRS COMPLETE.

| DRAINAGE TILE | DRAINAGE TILE |
|---------------|---------------|
| 3" TO 5" | 6" PIPE |
| 6" TO 8" | 8" PIPE |
| 7" TO 8" | 10" PIPE |
| 9" TO 10" | 12" PIPE |
| 1'-0" | W12 x 14 |
| 15" TO 18" | W16 x 26 |
| OVER 18" | W18 x 46 |

| PVC SCHEDULE 80 PIPE FOR BRIDGING SLEEVES | | | |
|-------------------------------------------|-----------------------|---------------------------------|---------------------------------|
| NOMINAL SIZE (INCHES) | AVERAGE O.D. (INCHES) | MAXIMUM WALL THICKNESS (INCHES) | MAXIMUM AVAILABLE I.D. (INCHES) |
| 4 | 4.5000 | 0.3370 | 3.8260 |
| 6 | 6.6250 | 0.4320 | 5.7610 |
| 8 | 8.6250 | 0.5000 | 7.6250 |
| 10 | 10.7500 | 0.5930 | 9.5640 |
| 12 | 12.7500 | 0.6870 | 11.3760 |

| AASHTO M252 SINGLE WALL, CORRUGATED, PERFORATED (SLOTTED) POLYETHYLENE DRAIN LINE | |
|-----------------------------------------------------------------------------------|---------------------------|
| NOMINAL SIZE (INCHES) | OUTSIDE DIAMETER (INCHES) |
| 4 | 4.7100 |
| 6 | 7 |
| 8 | 9.9000 |
| 10 | 11.9000 |
| 12 | 14.4100 |
| 15 | 17.7000 |



- NOTES:
1. THE BRIDGING-SLEEVE REPAIR IS VERTICALLY POSITIONED ACROSS THE TRENCH SO IT MAINTAINS THE GRAVITY-FLOW GRADIENT OF THE ORIGINAL DRAIN TILE.
 2. BOTH OF THE RECONNECTIONS MAY BE LOCATED PHYSICALLY OUTSIDE OF THE BRIDGING-SLEEVE (LEFT) OR INSIDE THE SLEEVE (RIGHT) AFTER SLIDING IT OVER THE REPAIR.

| ORIGINAL | | REVISIONS | |
|----------|------|-----------|--|
| DATE | REV. | DATE | |
| DESIGNED | 1 | | |
| CHECKED | 2 | | |
| DRAWN | 3 | | |
| CHECKED | 4 | | |
| REVIEWED | 5 | | |
| APPROVED | 6 | | |
| | 7 | | |



| ORIGINAL | | REVISIONS | |
|----------|------|-----------|--|
| DATE | REV. | DATE | |
| DESIGNED | 1 | | |
| CHECKED | 2 | | |
| DRAWN | 3 | | |
| CHECKED | 4 | | |
| REVIEWED | 5 | | |
| APPROVED | 6 | | |
| | 7 | | |



| NO | REVISION | DATE | BY | APR |
|----|----------|----------|-----|-----|
| A | XXX | XX/XX/XX | XXX | XXX |



| ENGINEERING RECORD | | DATE |
|--------------------|----------------|----------|
| DRAWN | T. WILCOX | 08/14/20 |
| DESIGNED | | |
| CHECKED | | |
| APPROVED | | |
| DWG SCALE: NONE | PLT SCALE: 1:1 | |

| EMPIRE STATE TRANSMISSION LINE | |
|--------------------------------|----------------|
| DRAIN TILE REPAIR TYPICAL | |
| DWG. NAME: EST-B-P002-62 | REVISION NO: A |